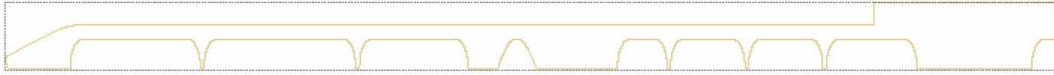


The Cadogan Colonnade Café is a visually distinctive new destination point and amenity for residents and tourists, shoppers and visitors alike. Taking the adjacent Grade II listed wall as a line of departure, the Café is defined by a new wall that traces a contemporary arc to coil around itself and envelop a space progressing from inside to outside in layers. The wall is cut in places to create openings and form a colonnade that echoes the colonnade of the Duke of York Headquarters. The wall is finished in a bespoke herringbone porcelain tile that shimmers softly in the light, and creates a strong connection with Chelsea's crafts heritage.

On the Ground level of the café, glazed walls can be fully retracted into the ground to allow free-flowing movement of people and air between inside and outside during warm weather. At roof level the Café will offer the community a new green space for people to sit and drink in high-level views of the Square and its surroundings. A complementary programme of artistic commissions sourced from an emerging generation of Chelsea artists will be installed in the Duke of York Square to delight all who come to play.



A NEW COLONNADE WALL

PUBLIC AMENITIES TO BE FURTHER DEVELOPED



Cultivate Congestion

Increase opportunities for the square to be occupied during a regular day. New place making should be layered to create a sense of discovery and intimacy.



Make the space Free to Play

The new cafe and masterplan should encourage informal engagement and play for users of all ages. Embody unique history of site by combining culture and play.



Quiet conversation to Social Spectacle

The screening of events like the Olympics and Wimbledon appears to have been very successful. The new cafe project should be a seed for further programmatic flexibility.



Create Rooms with Views

The greenspace, though having limited accessibility, is a significant public amenity. The cafe should be a transparent space that highlights the green backdrop and creates multiple distinctive vantage points to enjoy the view.



VIEW FROM 'BLOCK A' OFFICE ROOF LOOKING WEST OVER SQUARE

SITE ANALYSIS

Planting

Greening the Gap

With the exception of the Cafe site, there is an almost continuous perimeter of green planting and foliage around the running track. A new cafe could contribute to this green landscape.

External views

Shaped by Views

The building volume should appear slender when approaching on the diagonal. Opaque service zones should be concentrated to the east to maximise transparency between the street and park.

Seating **Take away**

Service Orientation

The arrangement of cafe services should reinforce existing wayfinding tendencies. A highly visible takeaway counter along the north west - south east route, and seated service to the west facing the quieter part of the square.

Interior views

Seating Arrangement

Smaller tables for 1-2 people should be oriented towards busy parts of the square, so people have a good vantage point. Larger tables that are more inward focused can be placed towards the quieter park side.

SITE CHALLENGES TO BE ADDRESSED



Cafe Queues

Sitting and take-away service counters should be separated. There is sufficient demand for a proper take away kiosk.



Scarce Seating

There is inadequate informal seating around square, which is acute at weekends. There should be more places to watch the world pass by.



Weekend Congestion

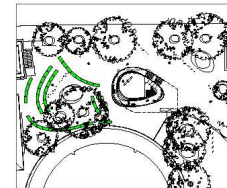
The level of overcrowding at weekends can be uncomfortable. A new layout for the market that is coherent with the overall site masterplan and Christmas kiosks is needed.



Lost in the Dark

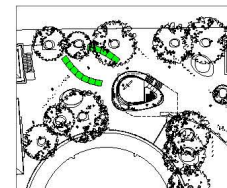
Use materials and lighting to make the cafe a signal presence in the square at night when it is both open and closed.

SITE MASTERPLAN



Weekly Market

The stalls are re-arranged to improve pedestrian circulation, and are arrayed around 'West Pedestal' to create a space for seating, play and art at the centre of the activity.



Christmas Market

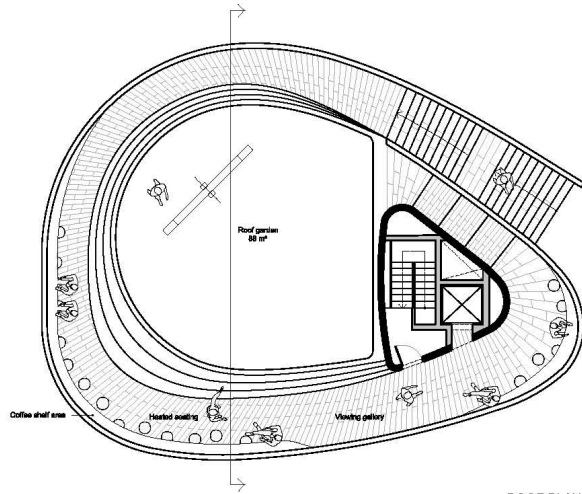
The Christmas kiosks are arranged to attract pedestrians off the Kings Road, while also working with the arrangement of market stalls at the weekends.



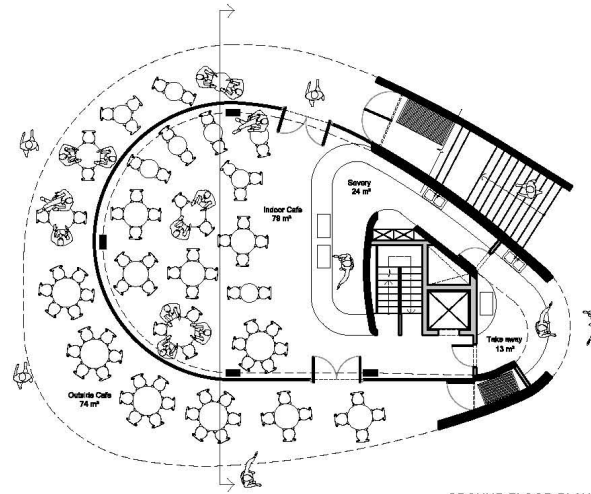
SITE PLAN

We have taken the strongest amenities of the site - green space, trees, and open space and sought to reinforce them with a simple concept of an extending the ribbon wall out into the square. These low ribbon walls are coiled around the existing trees to create generous seating, and three new pedestal features in the square.

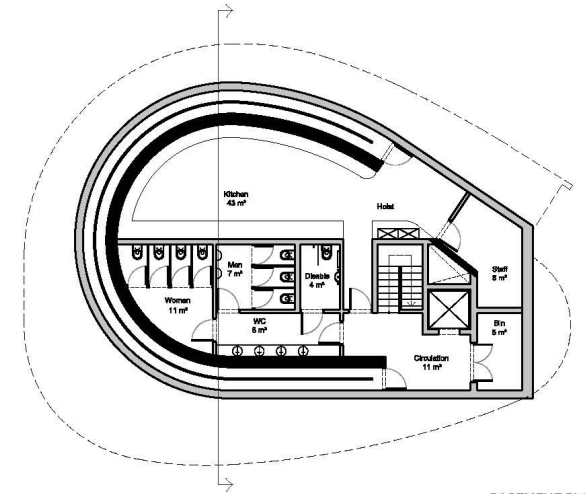
The central pedestal ribbons are finished in the same porcelain tile as the cafe with a dark limestone in-fill. At times they are filled with shallow water features, when not being used as a setting for the annual Cadogan Art Commission.



ROOF PLAN SCALE 1:100



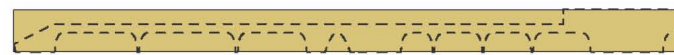
GROUND FLOOR PLAN SCALE 1:100



BASEMENT PLAN SCALE 1:100



1. BLANK WALL

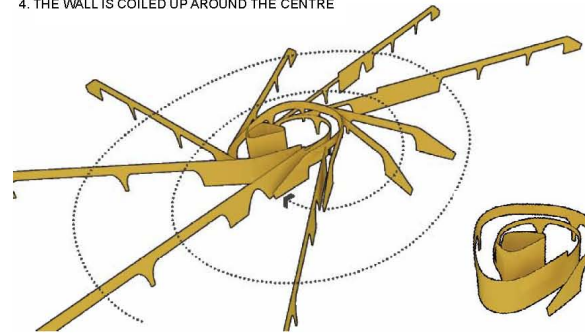


2. CUT AND TRIM

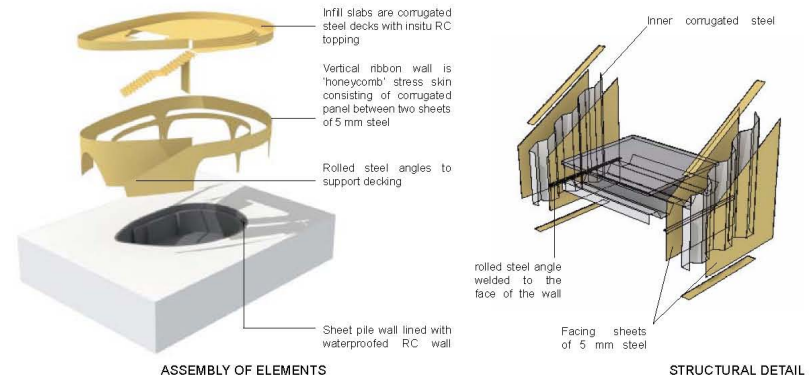


3. INFILL WITH GLASS AND AIR

4. THE WALL IS COILED UP AROUND THE CENTRE



5. ENVELOPE OF THE CAFE



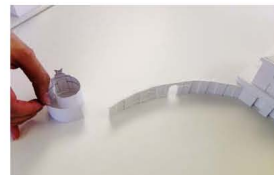
ASSEMBLY OF ELEMENTS

STRUCTURAL DETAIL

The construction of the Café is simple and economic, using standard off-the-shelf materials and building components to create a lightweight and efficient construction, assembled in an expedient way by non-skilled workmanship.

In the spirit of a playful, light, but robust pavilion, we have adopted a stressed skin technology of monocoque construction commonly found in aeroplanes or ships, but employing very standard building components and connections. This is a tried and tested technology that is sustainable as it minimises material use and construction time, and uses local fabricators and craftsmen. The structure creates form and spatial enclosure, and avoids the need for expensive additional cladding.

- The structure consists essentially of three elements:
1. A one storey basement consisting of a soil retaining sheet-pile-wall lined with a waterproofed reinforced concrete wall to form a complete enclosure with the ground slab. This avoids large battered excavation and minimises the disruption to the square.
 2. A vertical singly-curved composite "ribbon wall" consisting of two facing steel sheets riveted to an inner corrugated steel panel to form an efficient load-bearing structural skin. The wall can be preassembled in 3m long panels spliced on site with simple riveted connections, using minimal temporary works.
 3. The floor infills consist of a corrugated decking with an in-situ reinforced concrete structural topping, spanning directly onto the ribbon wall or onto lightweight steel beams in the central portion of the building where spans are longer.



STUDY MODEL OF THE CURVED WALL BECOMING A COIL

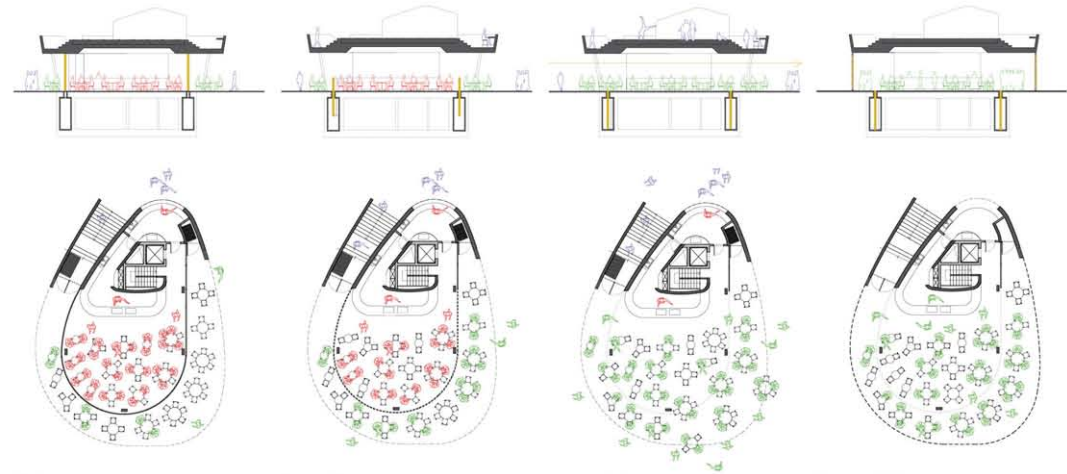


STUDY OF THE GROUND PLANE BEING PEELED AND ELEVATED TO CREATE A NEW ELEVATED PUBLIC SPACE



VIEW FROM THE KINGS ROAD

USE SCENARIOS - A CAFE FOR ALL SEASONS



Winters Day

The perimeter glazing is fully closed to create a warm internal environment. Outside sheltered seating is available and the take away kiosk is open.

Spring Mornings

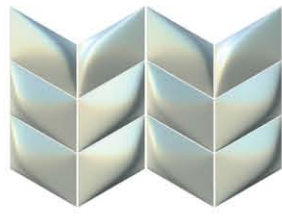
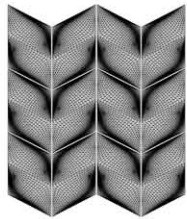
The perimeter glazing is half lowered to allow a breeze in at high level while offering some increased shelter to seated customers at lower level. The sense of connection with the outside seated customers is increased. The take away kiosk is open.

Summer Afternoons

The perimeter glazing is fully lowered allowing the free movement of people and air through the space. There is a complete continuity between inside and outside space. The take away kiosk is open.

Summer Nights

The perimeter glazing is fully lowered, but the outside sliding folding screen is closed. This creates a larger internal area. The activity inside is registered to passers by in a subtle way through the perforated screen. The take away kiosk is closed.



PORCELAIN TILING PATTERN



VIEW OF CAFE INTERIOR FROM WEST SIDE



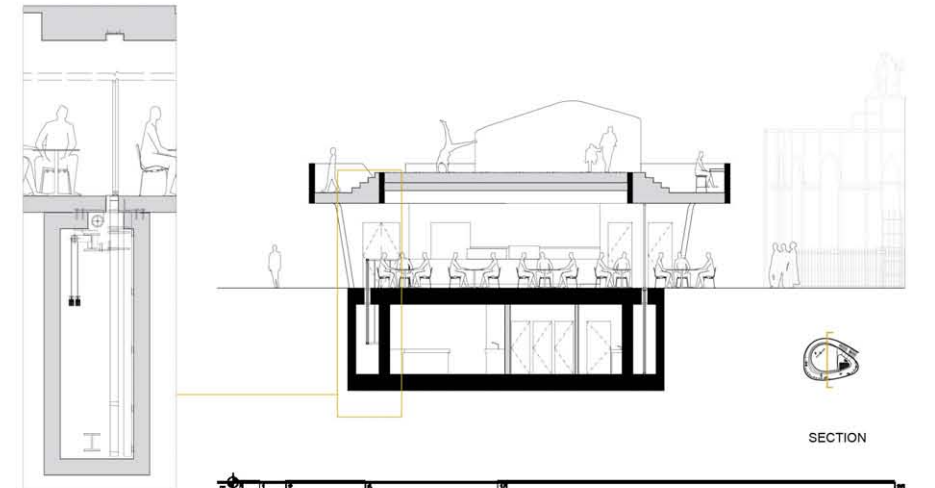
INDICATIVE ATMOSPHERE OF SQUARE AT NIGHT



VIEW FROM THE KINGS ROAD



DESCENDING GLASS WALL DETAIL



SECTION