

THE CADOGAN CAFÉ

More and more, our most valued public spaces are not just places to consume. They also serve as platforms for shared instants and experiences. They articulate our common delight in time, traditions, ideas and the presence of others.

We have partnered with curator Beatrice Galilee to imagine not just an expanded café, but an expanded place for experience; an annual programme of art commissions, events & installations. Chelsea's own 'fourth plinth' or 'turbine hall'.

Its architecture is, in some ways, about the opposite of a 'building'.

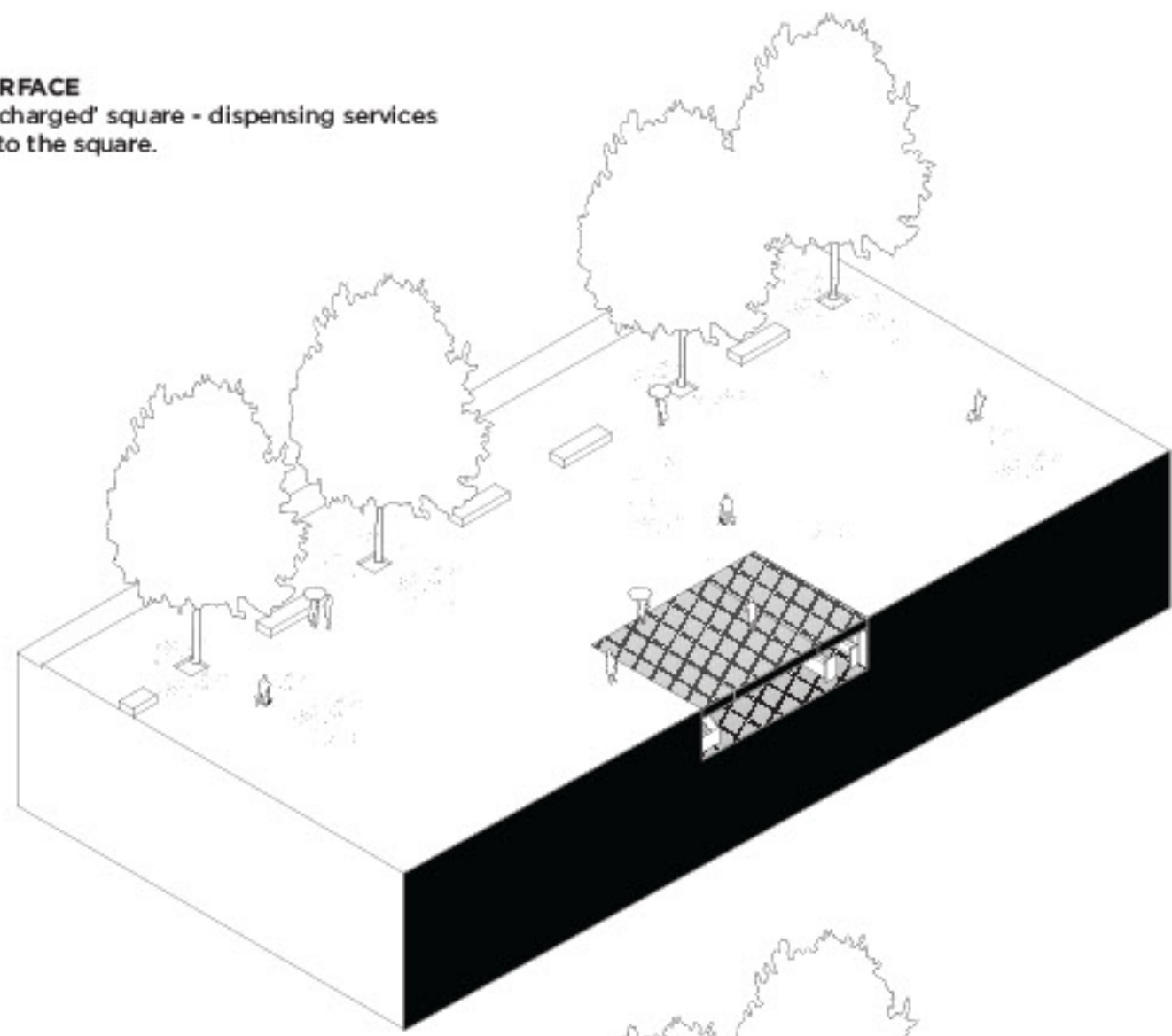
Not an object, but the surface of the square itself; a stage. A café that rises in the morning, and goes to sleep at night. Always there, but changed on each return.

It's an approach that unlocks the particular quality of Duke of York Square: that it, more perhaps than any other space in London, celebrates time, the timeless, the seasons. Nowhere feels more festive at Christmas, more summery during summer, more autumnal during autumn.

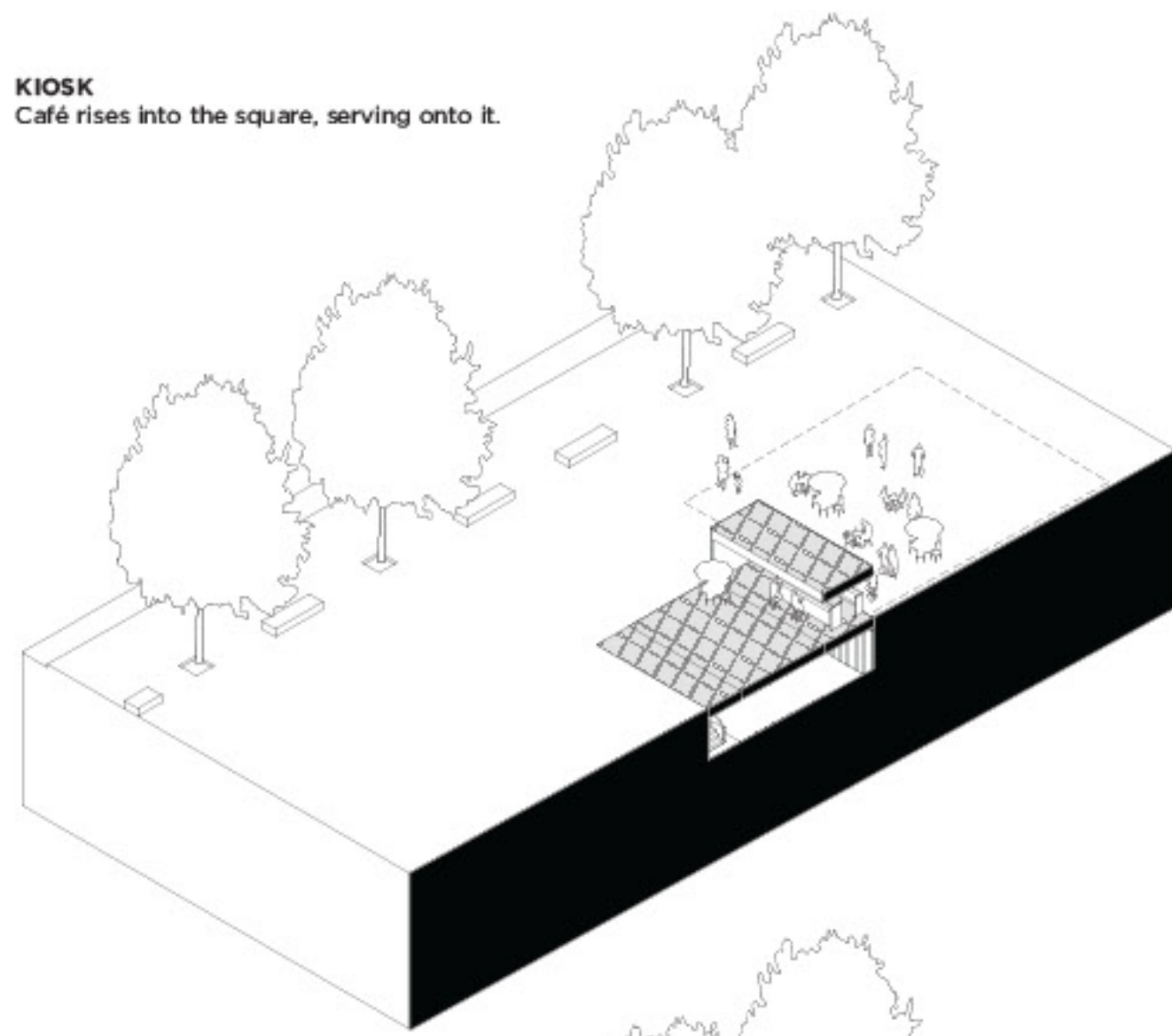
ARCHITECTURE 00: /



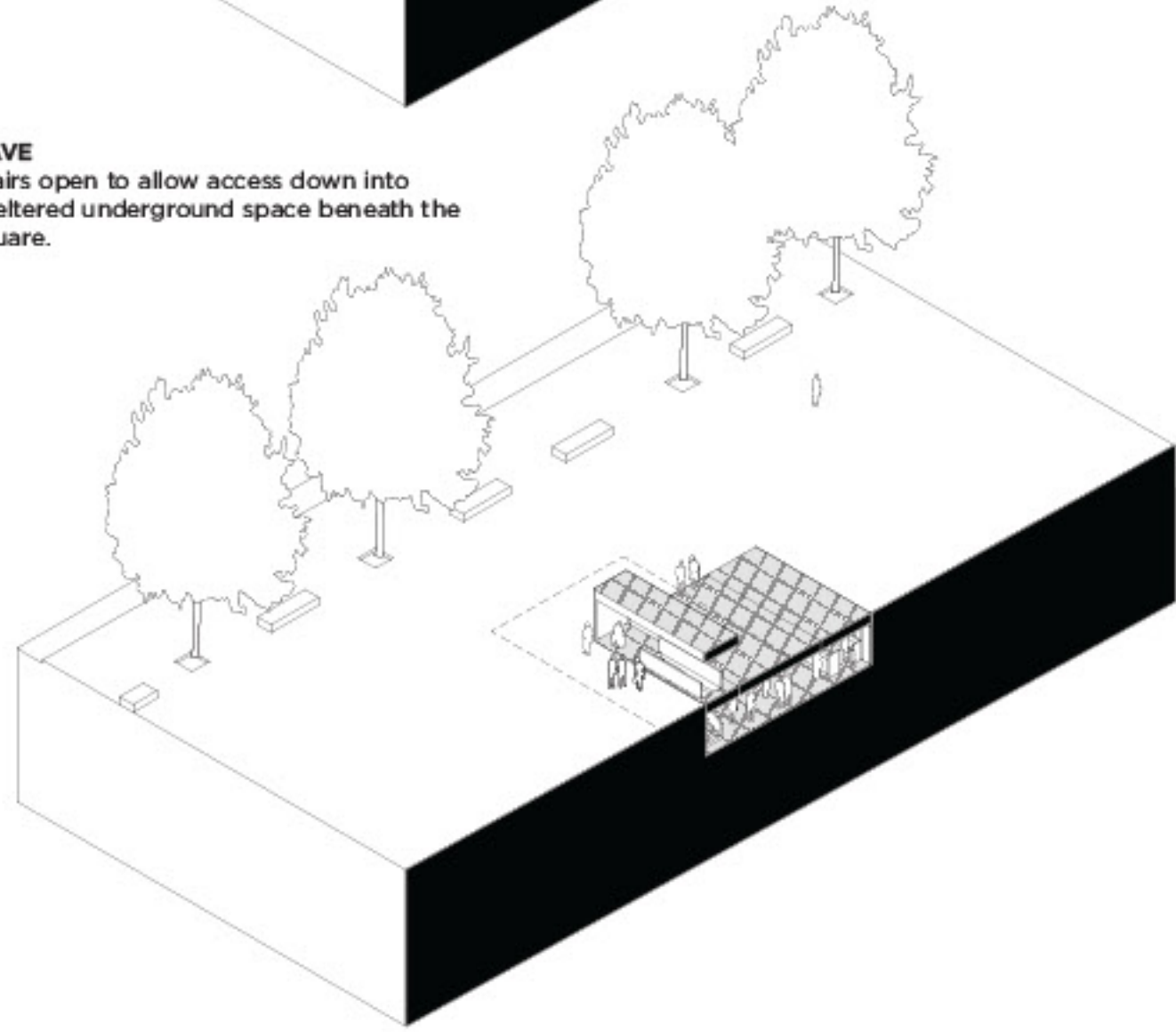
SURFACE
A 'charged' square - dispensing services onto the square.



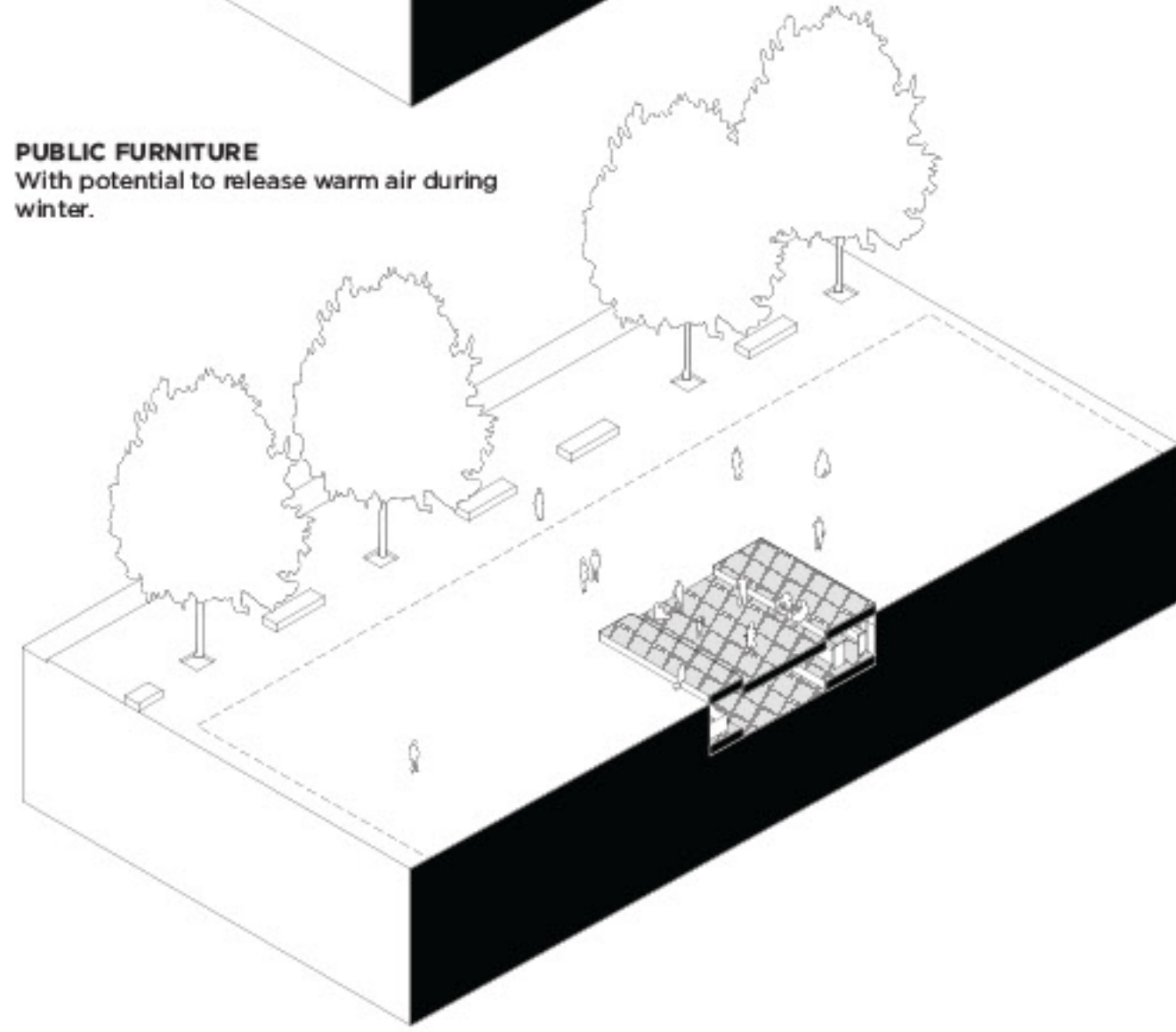
KIOSK
Café rises into the square, serving onto it.



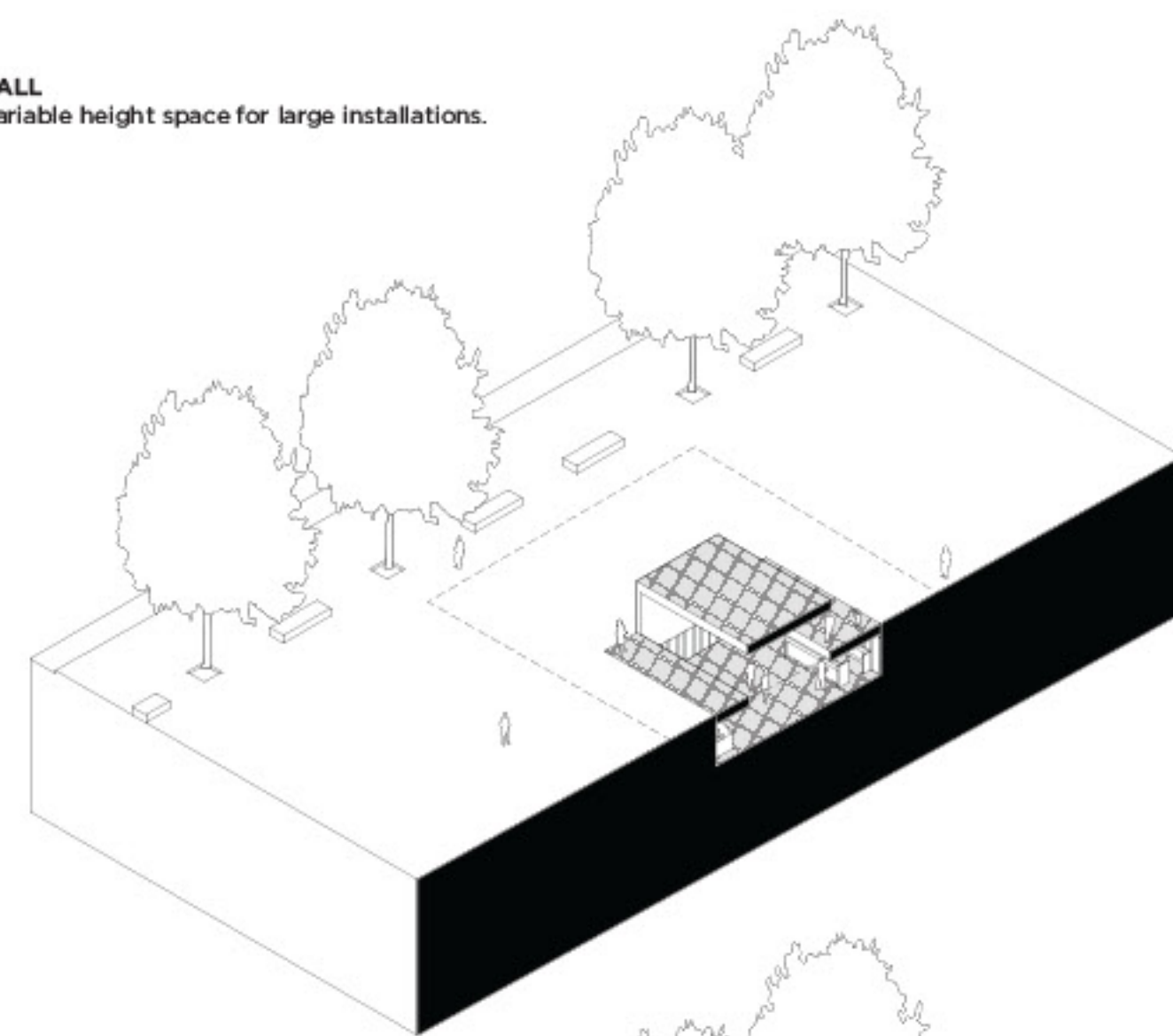
CAVE
Stairs open to allow access down into sheltered underground space beneath the square.



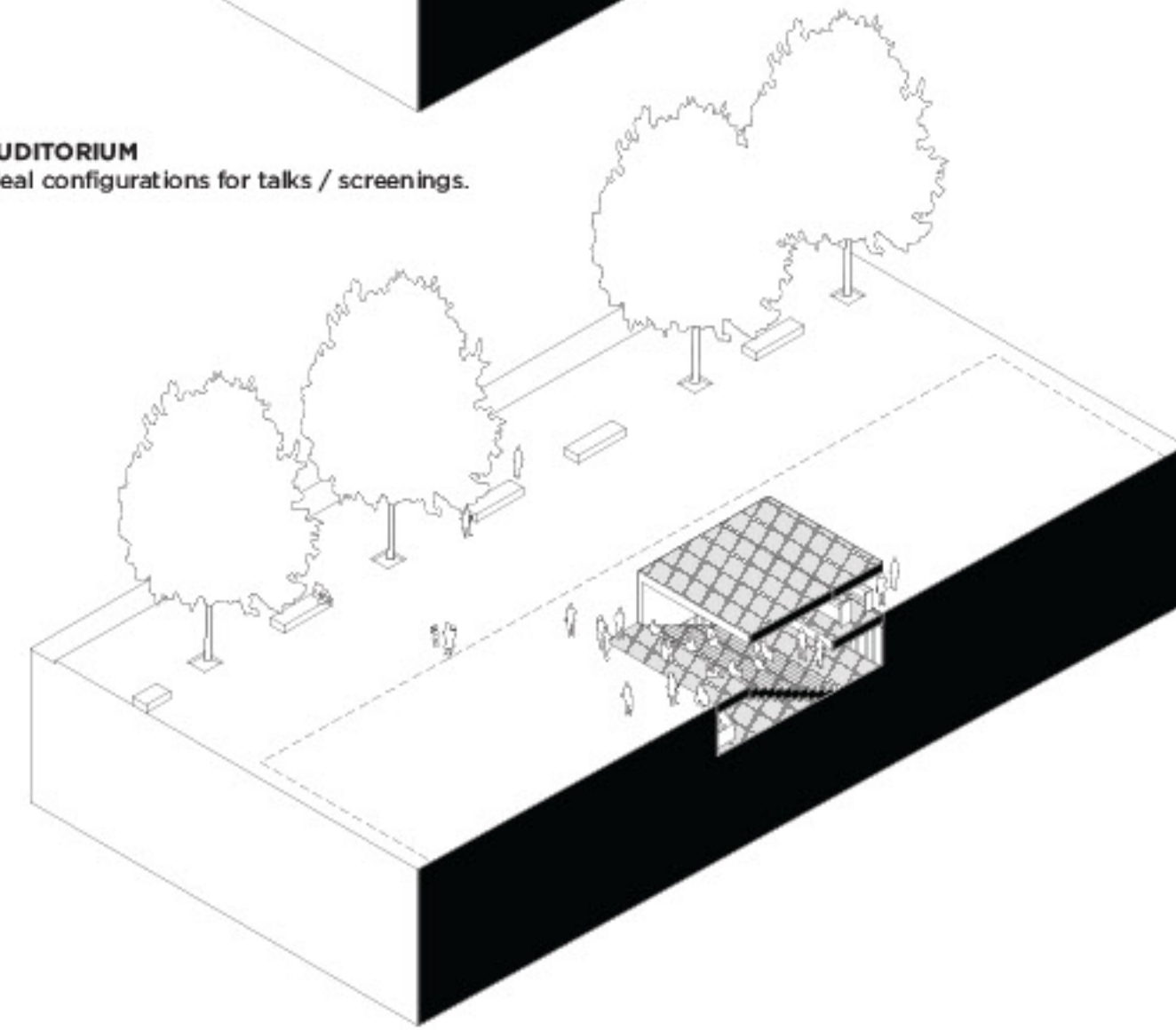
PUBLIC FURNITURE
With potential to release warm air during winter.



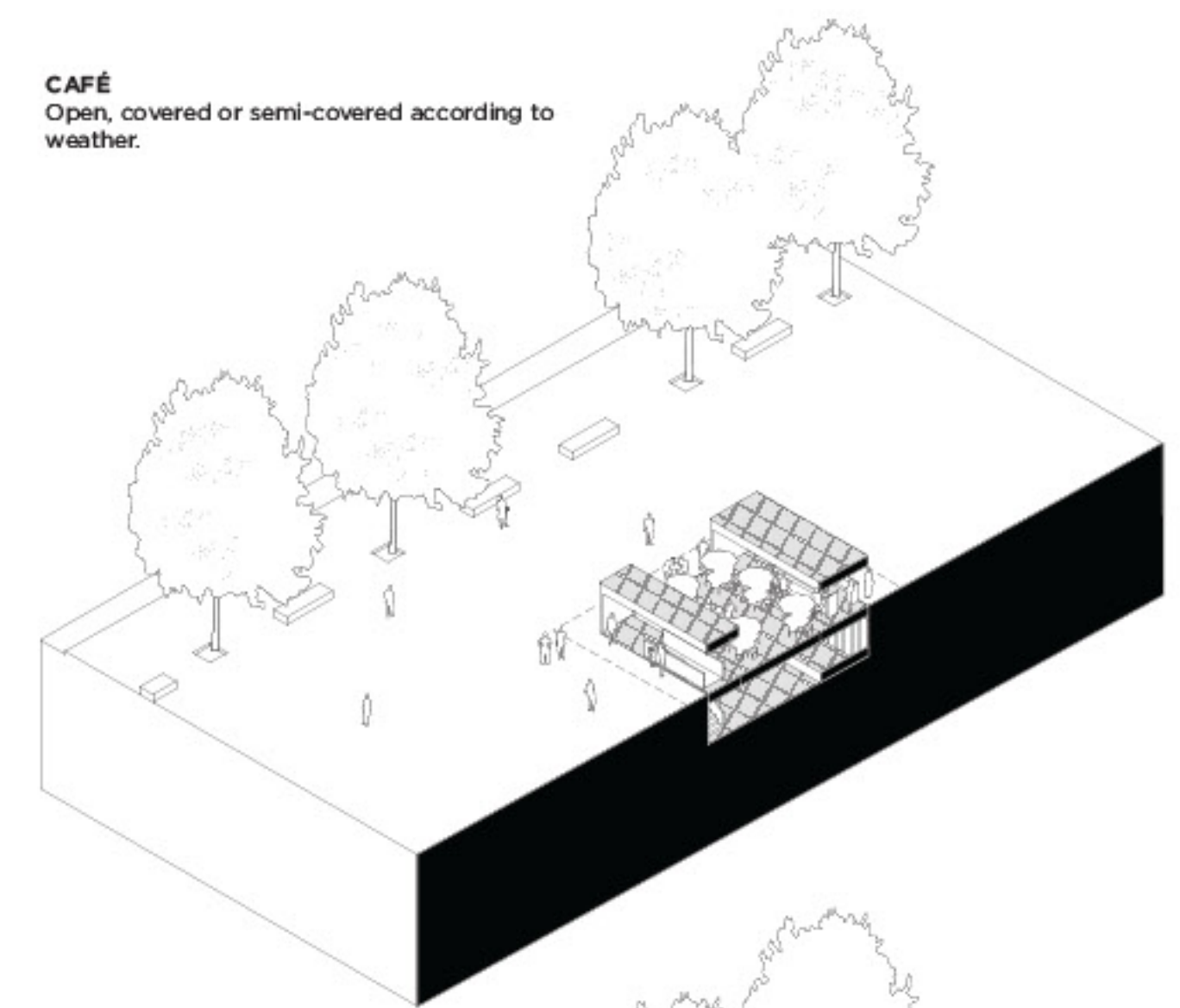
HALL
Variable height space for large installations.



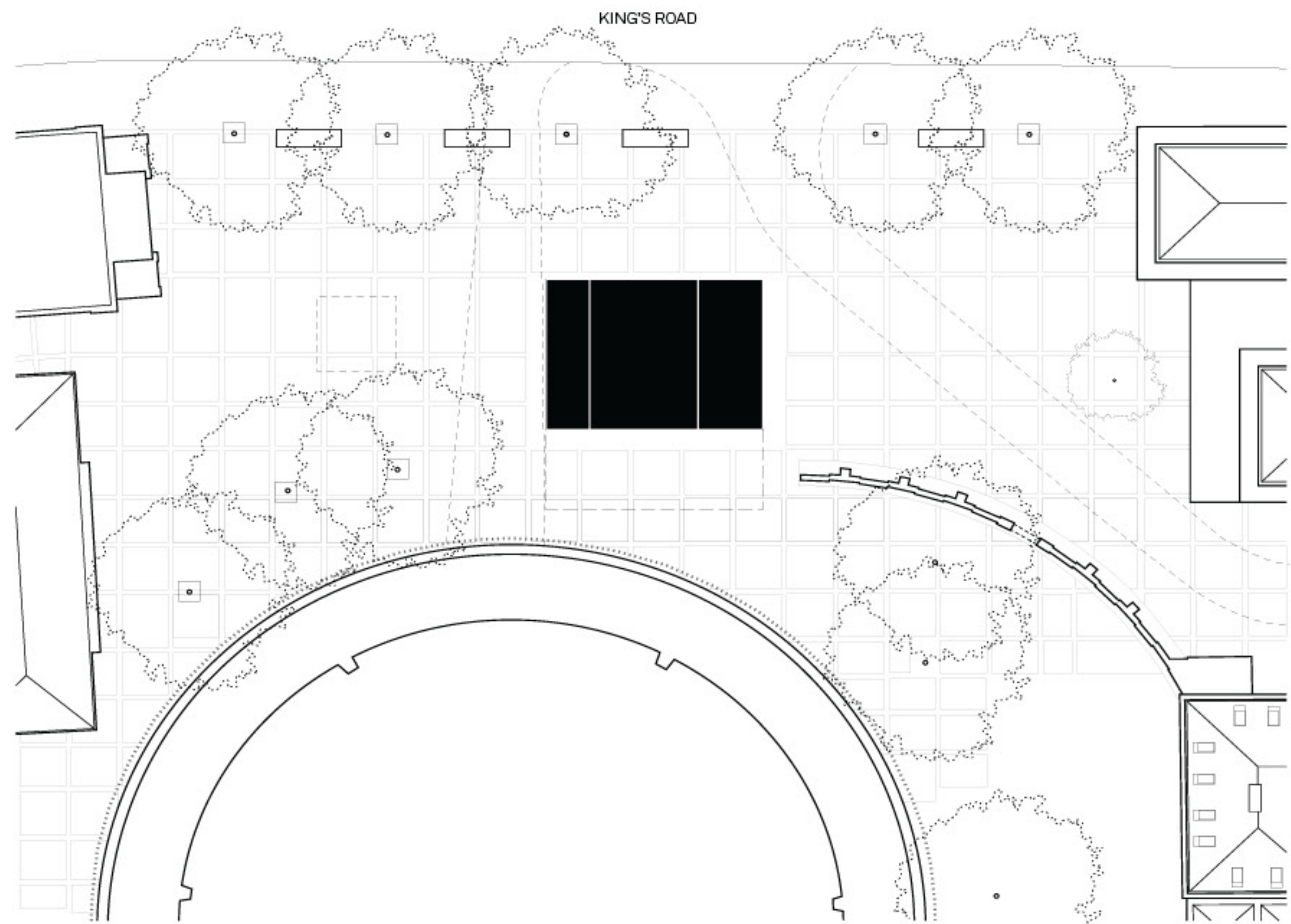
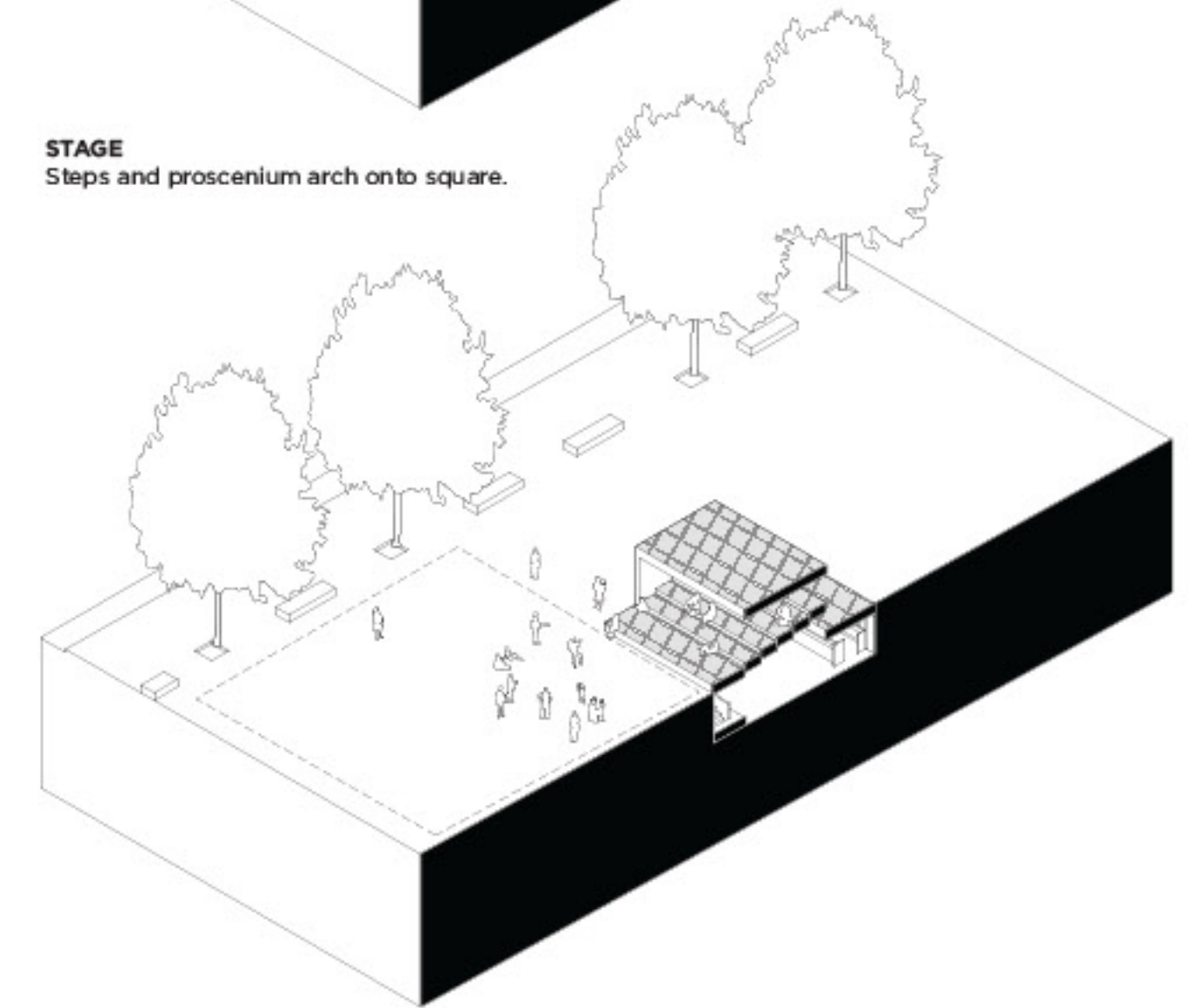
AUDITORIUM
Ideal configurations for talks / screenings.



CAFÉ
Open, covered or semi-covered according to weather.

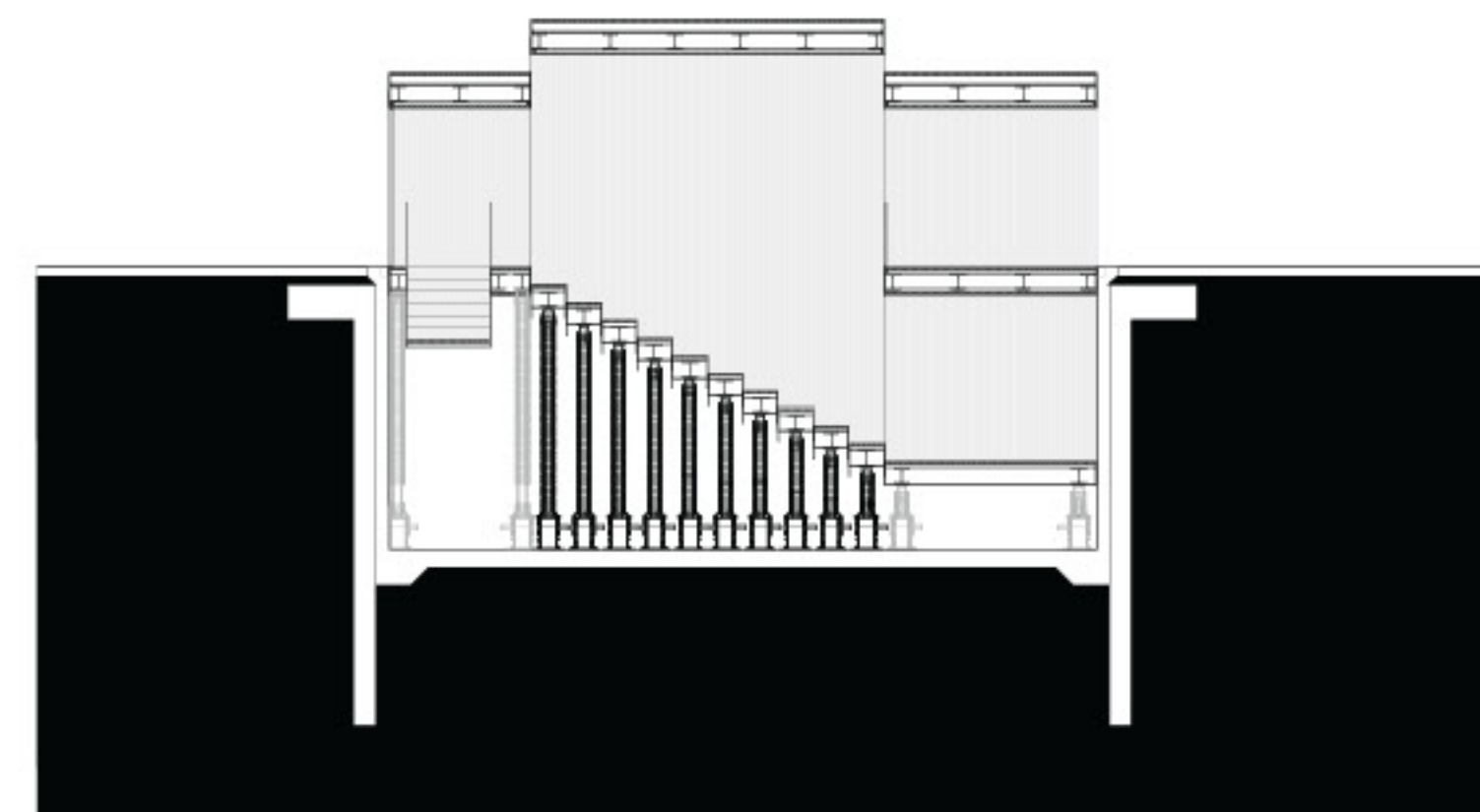


STAGE
Steps and proscenium arch onto square.

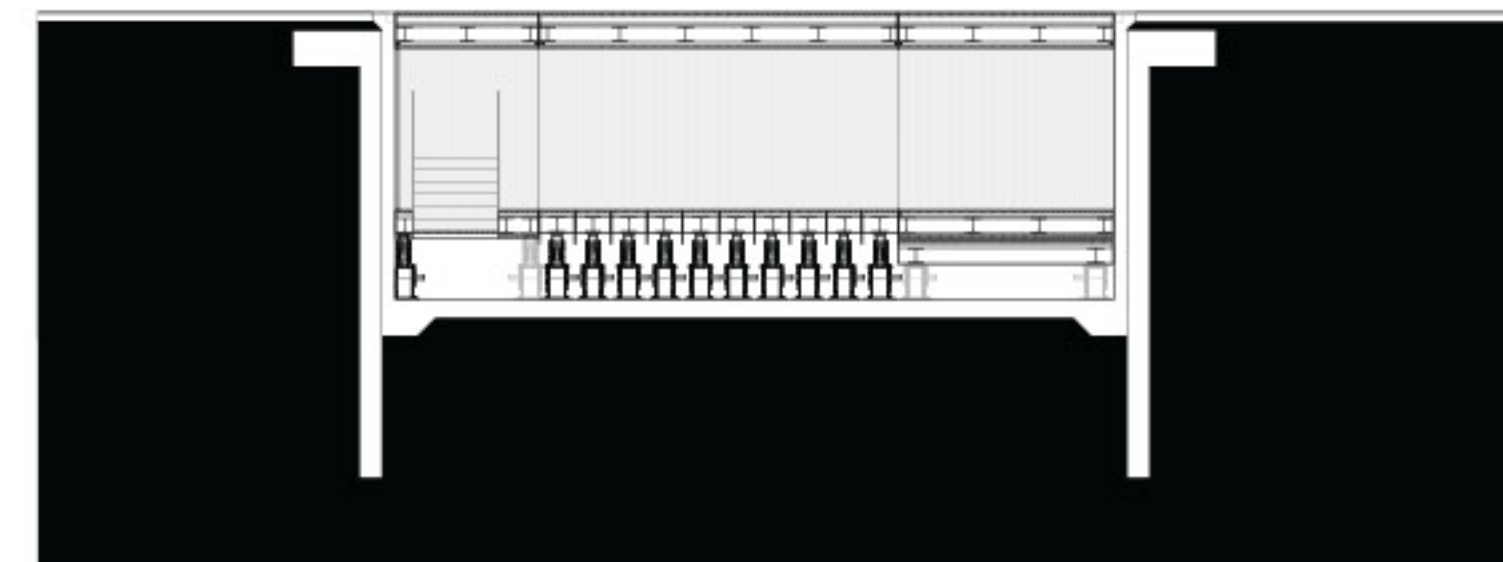


CONTEXT

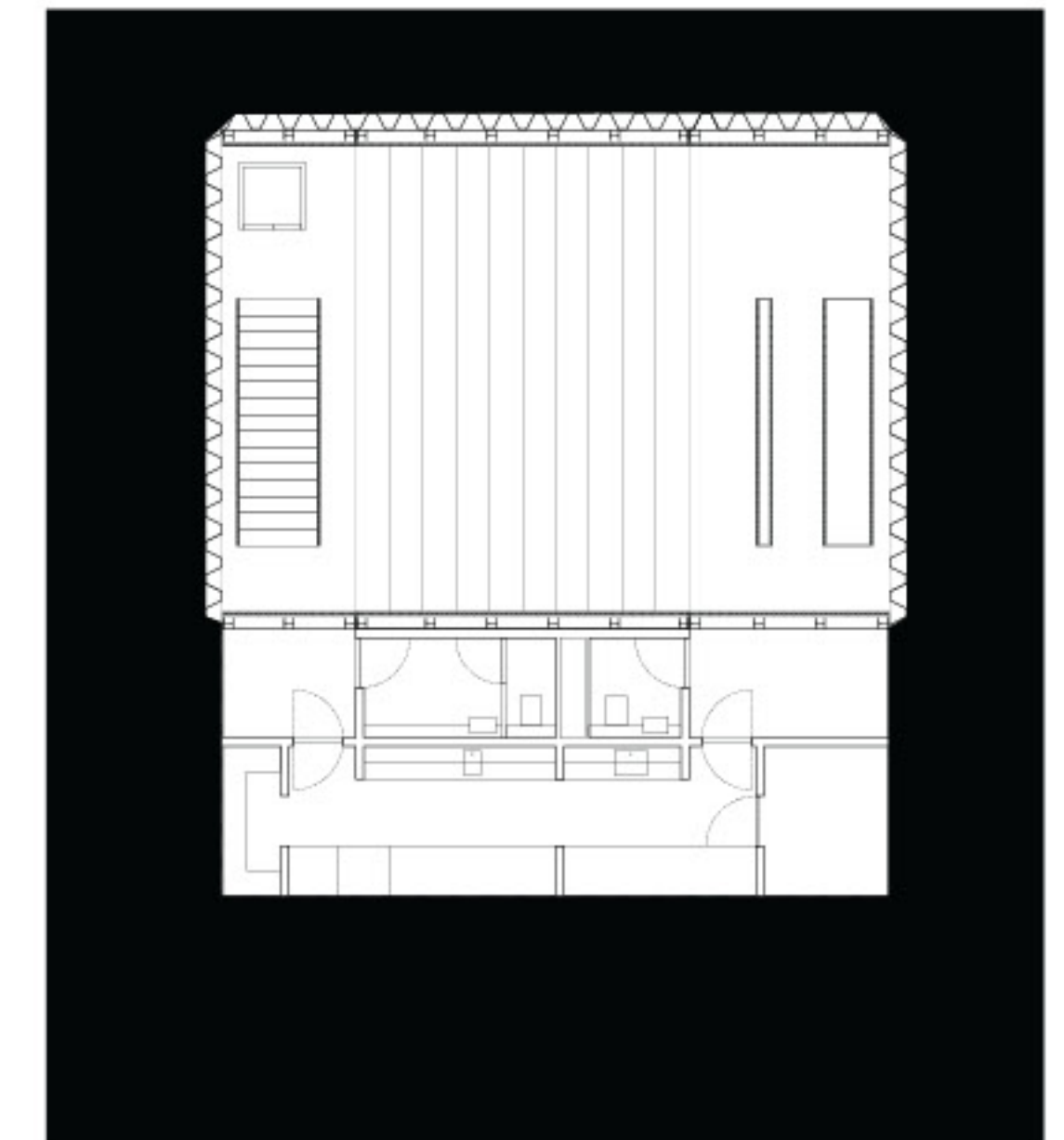
The edge of the square onto Kings Road is redefined. By clearing the main surface of fixed obstacles, the space is liberated for activity, such as markets.



SECTION / OPEN



SECTION / CLOSED



PLAN, BELOW GROUND / CLOSED

PROPOSAL

The project is conceived very literally as an 'inverted flytower' beneath the surface of the square. It uses existing technologies developed for stage to create a responsive, permanent piece of cultural infrastructure for Chelsea. It's internal grid allows any lighting or structures to be easily bolted onto its top surface, and into its internal walls, ceiling and floor.

AI WEIWEI
Artist installation, October.



DUKE OF YORK SQUARE CHRISTMAS MARKET
Annual tradition, December.



RANDOM INTERNATIONAL
The Rain Room - Weather control experience, April.



TOMAS SARACENO
Artist installation, July.



TROIKA
Talks by emerging designers, September.

